

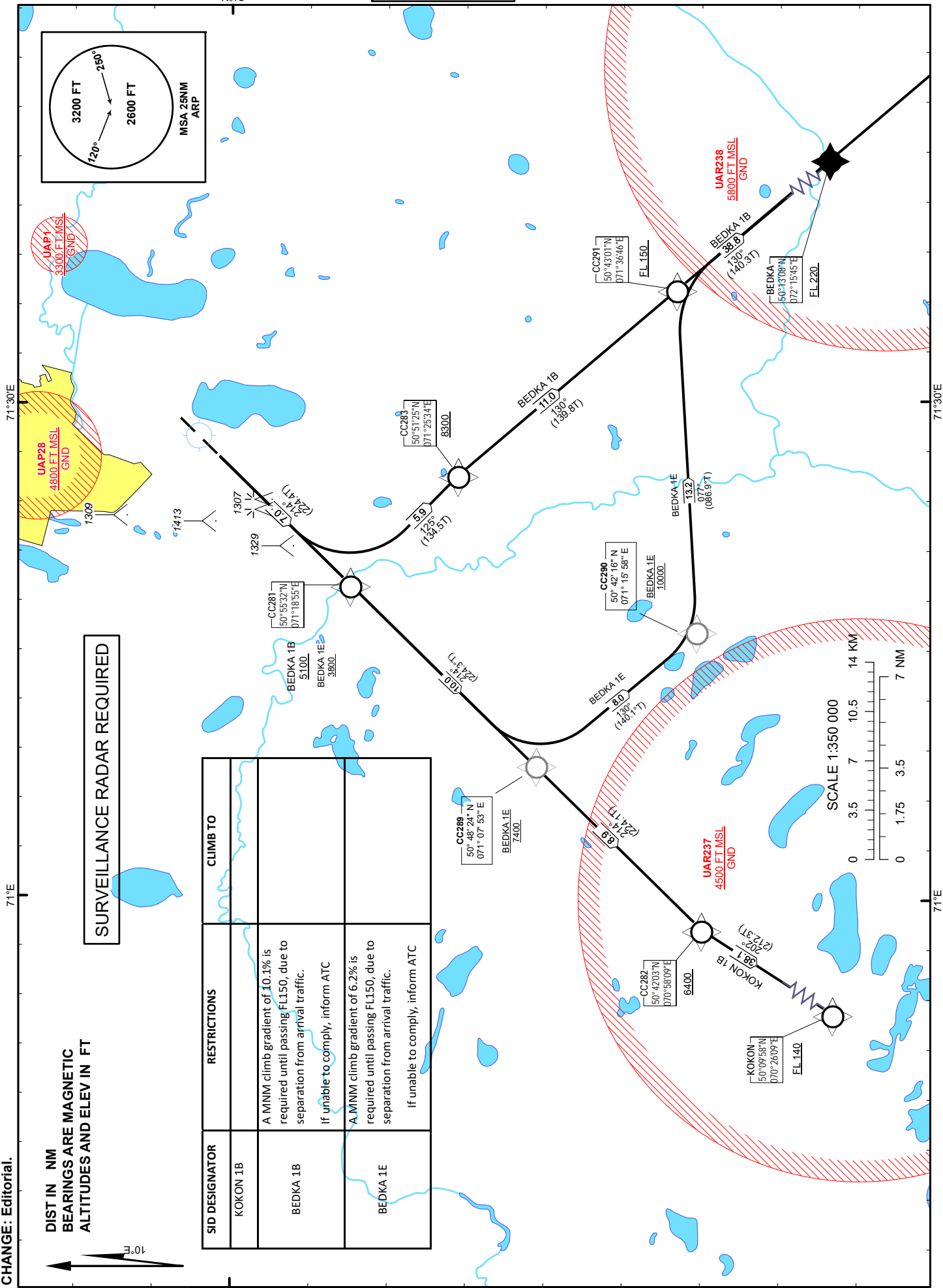
STANDARD DEPARTURE
CHART - INSTRUMENT
(SID) - ICAO

TRANSITION ALTITUDE
10000 FT

ASTANA TOWER 135.5
ASTANA APPROACH 124.6
ASTANA RADAR 120.7
ASTANA ATIS(EN) 129.5
ASTANA ATIS(RU) 128.3

BEDKA 1B, BEDKA 1E,
KOKON 1B
(RNAV 1 SID BASED ON GNSS)

ASTANA
NURSULTAN NAZARBAYEV
INTERNATIONAL AIRPORT
RWY 22



TABULAR DESCRIPTION

BEDKA 1B RWY22											
Serial Number	Path Descriptor	Waypoint Identifier	Fly - over	Course °M(°T)	Magnetic Variation(°)	Distance NM	Turn Direction	Altitude FT	Speed KT	VPA (°)	Navigation Specification
10	CF	CC281	-	214(224.4)	10	7	-	+5100	-250	6.6	RNAV1
20	TF	CC283	-	125(134.5)	10	5.9	L	+8300		6.6	RNAV1
30	TF	CC291	-	130(139.8)	10	11	R	+FL150		6.6	RNAV1
40	TF	BEDKA	-	130(140.3)	10	38.8	-	+FL220		1.9	RNAV1

WAYPOINT LIST

BEDKA 1B											
Waypoint Identifier	Coordinates										
DER	510031.69N	0712641.10E									
CC281	505532.44N	0711855.42E									
CC283	505124.63N	0712534.27E									
CC291	504301.41N	0713646.15E									
BEDKA	501318.00N	0721545.00E									

WAYPOINT LIST

BEDKA 1E											
Waypoint Identifier	Coordinates										
DER	510031.69N	0712641.10E									
CC281	505532.44N	0711855.42E									
CC289	504824.01N	0710753.04E									
CC290	504216.41N	0711558.43E									
CC291	504301.41N	0713646.15E									
BEDKA	501318.00N	0721545.00E									

TABULAR DESCRIPTION

BEDKA 1E RWY22											
Serial Number	Path Descriptor	Waypoint Identifier	Fly - over	Course °M(°T)	Magnetic Variation(°)	Distance NM	Turn Direction	Altitude FT	Speed KT	VPA (°)	Navigation Specification
10	CF	CC281	-	214(224.4)	10	7	-	+3800	-250	3.5	RNAV1
20	TF	CC289	-	214(224.3)	10	10	-	+7400		3.5	RNAV1
30	TF	CC290	-	130(140.1)	10	8	L	+10000		3.5	RNAV1
40	TF	CC291	-	77(86.9)	10	13.2	L	+FL150		3.5	RNAV1
50	TF	BEDKA	-	130(140.3)	10	38.8	R	+FL220		1.9	RNAV1

TABULAR DESCRIPTION

KOKON 1B RWY22											
Serial Number	Path Descriptor	Waypoint Identifier	Fly - over	Course °M(°T)	Magnetic Variation(°)	Distance NM	Turn Direction	Altitude FT	Speed KT	VPA (°)	Navigation Specification
10	CF	CC281	-	214(224.4)	10	7	-	+2600	-250	1.9	RNAV1
20	TF	CC289	-	214(224.3)	10	10	-	+4600		1.9	RNAV1
30	TF	CC282	-	214(224.1)	10	8.9	-	+6400		1.9	RNAV1
40	TF	KOKON	-	202(212.3)	10	38.1	L	+FL140		1.9	RNAV1

WAYPOINT LIST											
KOKON 1B											
Waypoint Identifier	Coordinates										
DER	510031.69N	0712641.10E									
CC282	504202.54N	0705809.22E									
KOKON	500958.00N	0702609.00E									